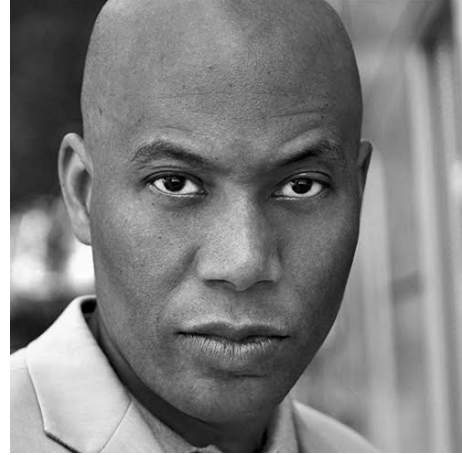


Clifford Fraser

Senior Structural Engineer



clifford.f@pelusoconsortium.com

2006 – present

Senior Structural Engineer, PCC

Manages all phases of major development/construction projects. Specialty in technical project evaluation, meetings and data reviews from conception to completion.

1995 – 2006

Head Structural Engineering, D&C Construction, New Madrid, Missouri

Project Lead in management, research, design and construction of new and renovated industrial, manufacturing, and office facilities. Conducted soil, underground utility, and civil analysis and design of concrete and steel structures.

1989- 1995

Senior Geologist, Leighton Group, Irvine California

Prepared geologic/geotechnical reports reviewed logs of borings and trenches. Supervise field exploration programs, background reviews, in-grading geological mapping.



1987 – 1989

Junior Environmental Geologist, AECOM, Orange, California

Lead a variety of fieldwork including environmental assessments, site inspections, and contractor oversight.

1982 – 1987

MS: Geology, University of Santa Cruz, California

MS: Structural Engineering, NJIT, Newark, New Jersey
(Registered PE)